



Legitronic® Labeling Software Printer Driver Installation

03/15/2010 VERSION 364

Printer Driver Installation

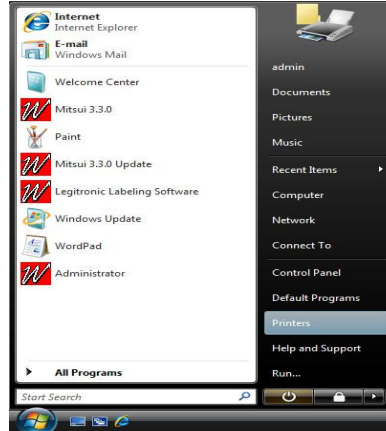
Follow the Manufacturers Manual for the printer installation instructions.

Installing your Windows Print Driver on a Windows XP , VISTA, Windows 7 (32 & 64-bit), Windows Server 2003/2008 computer.

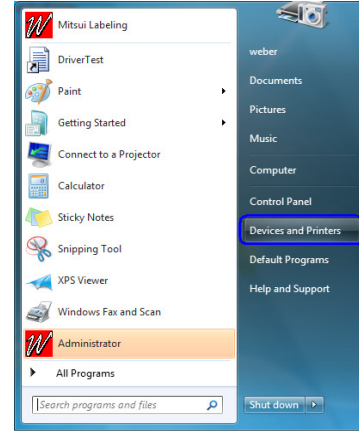
1. Go to the Start Menu, and then press Printers and Faxes(Windows XP),
Printers(VISTA), and/or Devices and Printers(Windows 7) :



Windows XP(32-bit)

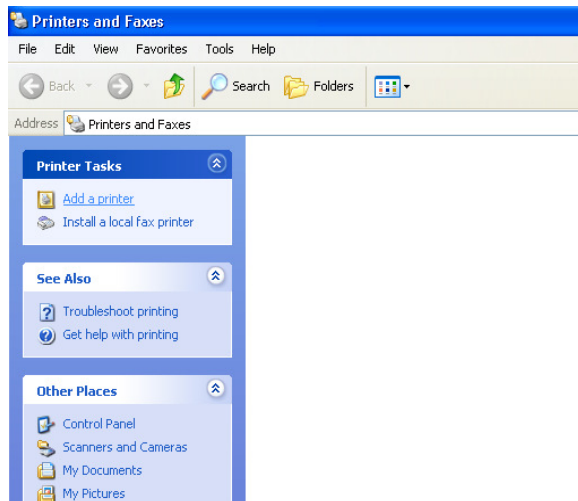


Windows VISTA(32 & 64-bit)

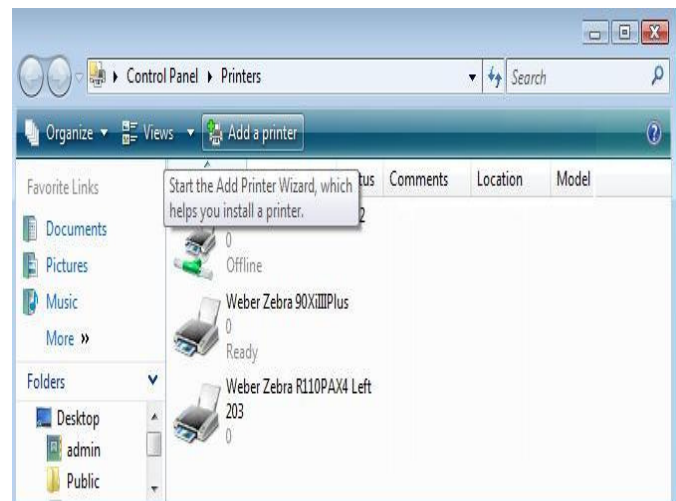


Windows 7 (32 &64-bit)

2. Double-click the Add Printer Icon under Printer Tasks Menu to activate the
Windows Add Printer Wizard.



Windows XP

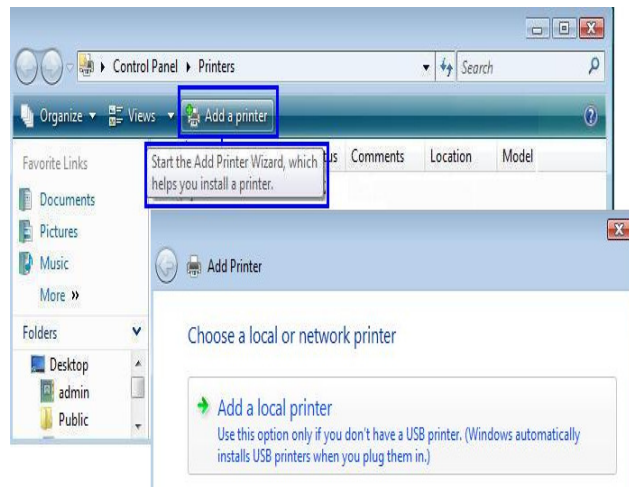


Windows VISTA & 7 (32 & 64-bit)

1. To begin the Installation wizard press Next(for Windows XP) or “Add a Local Printer” (for Windows VISTA & Windows 7, 32 &/or 64-bit) :

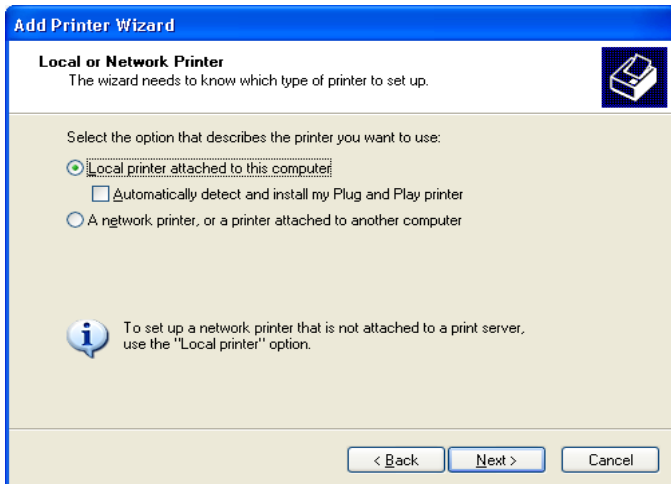


Windows XP

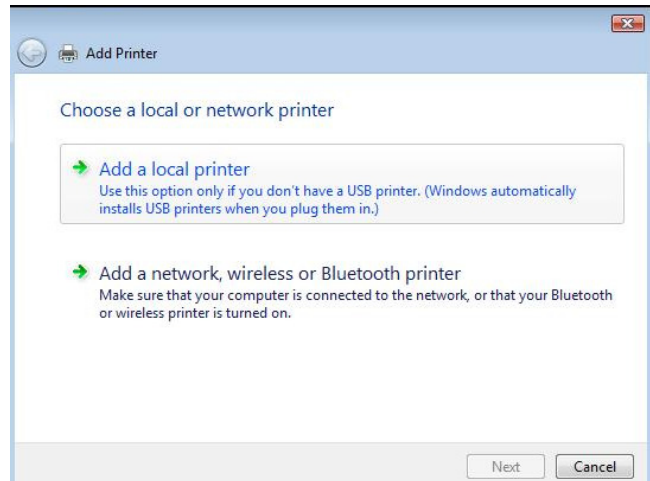


Windows VISTA & 7 (32 & 64-bit)

4. To install a local printer select the Local printer option, then click Next button.

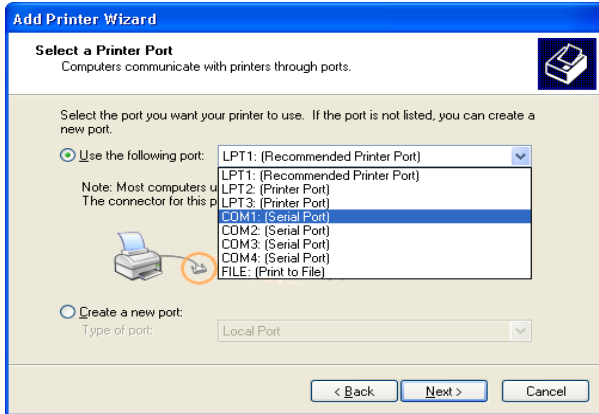


Windows XP

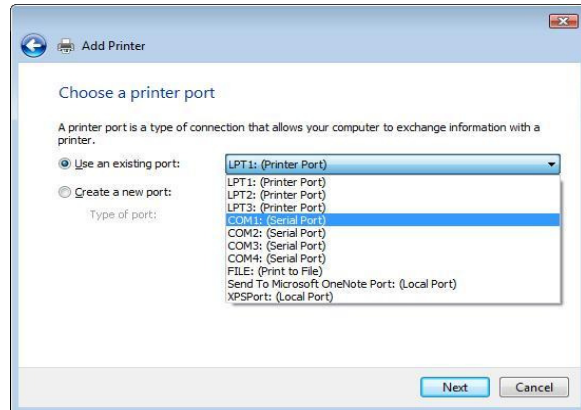


Windows VISTA & 7 (32 & 64-bit)

1. From the list of Available ports, select the port that your printer cable is physically connected to. Click the Next button.

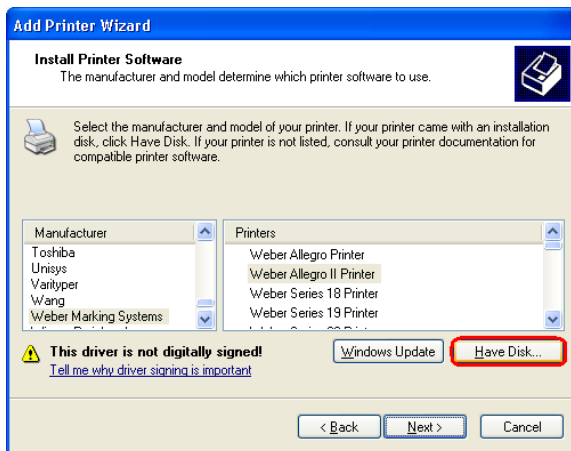


Windows XP

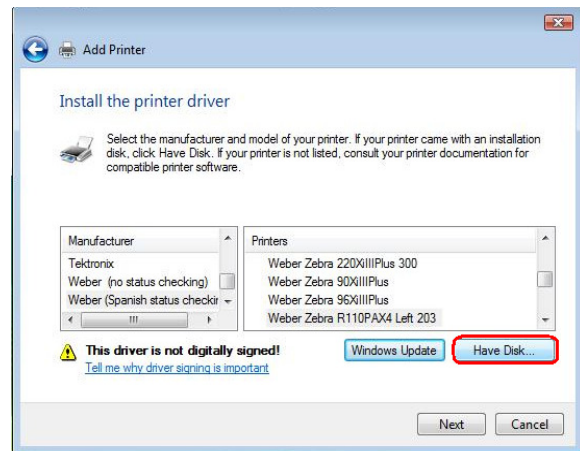


Windows VISTA & 7 (32 & 64-bit)

2. Press the Have Disk... button.

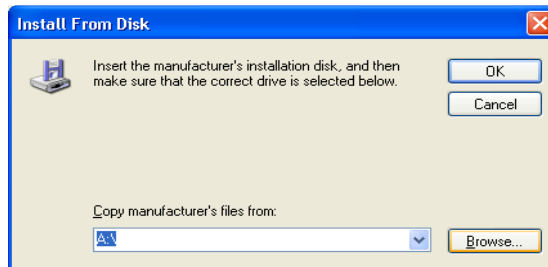


Windows XP



Windows VISTA & 7 (32 & 64-bit)

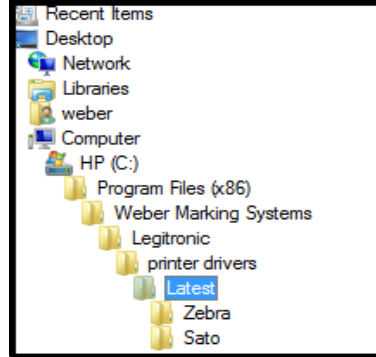
3. Press Browse Button.



4. Select the following path (*Depending on the type of printer/print-engine you have*), Print Drivers are saved on your Hard Drive :
 - ❑ **For Windows XP, VISTA and/or Windows 7 (32-bit) →**
 C:\Program Files\Weber Marking Systems\Legitronic\Printer Drivers\Latest\Zebra <or> Sato
 - ❑ **For VISTA and/or Windows 7 (64-bit) →**
 C:\Program Files(x86)\Weber Marking Systems\Legitronic\Printer Drivers\Latest\Zebra <or> Sato

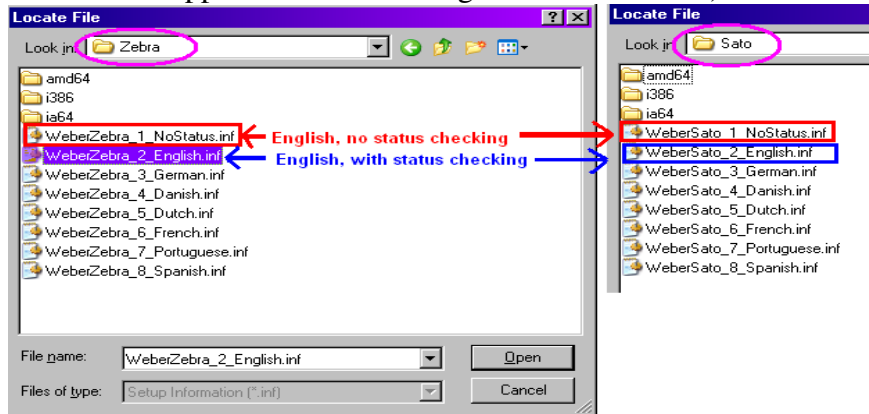


Windows XP/VISTA & 7 (32-bit)



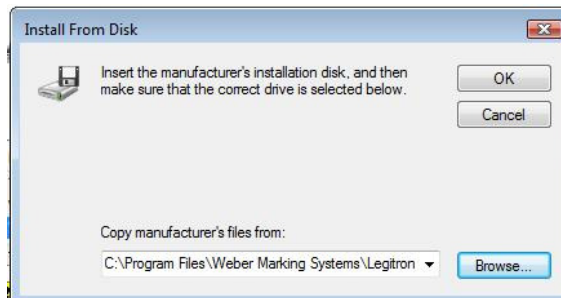
Windows VISTA & 7 (64-bit)

- ❑ Select the desired language. Legitronic supplies a number of foreign languages; i.e.: Danish, Dutch, English, French, German, Portuguese, and Spanish (all of these install “status checking”).
- ❑ **However**, the new configuration includes an **install that does not install “status checking”(NoStatusChecking)**. It is not necessary to disable bi-directional support when this configuration is installed)



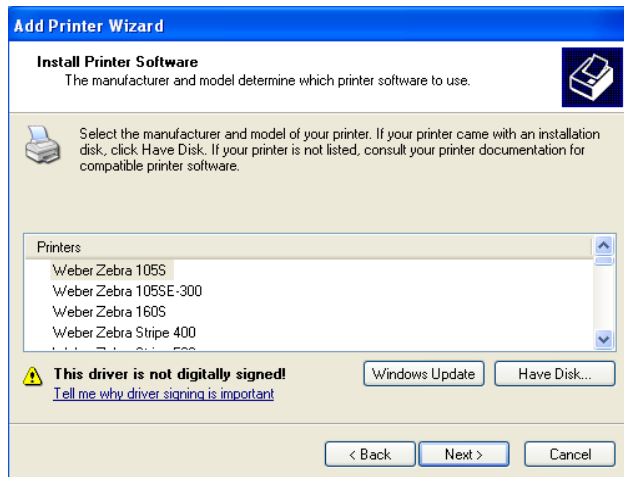
Driver Configuration

5. Your new path will display in the "Copy manufacturer's file from:" box. Click the OK button to continue.

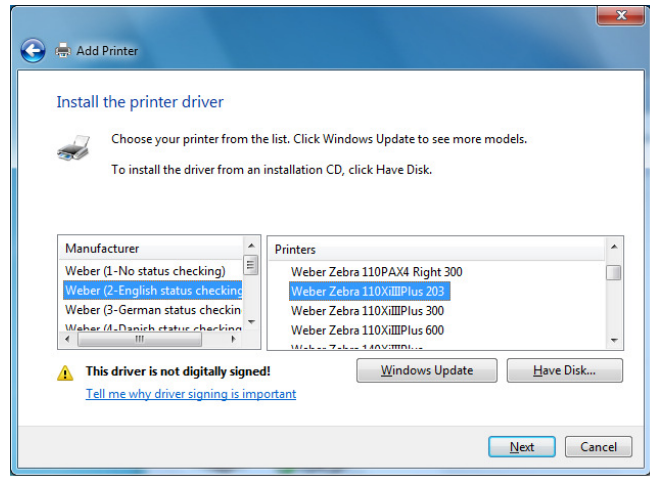


Windows XP, VISTA & 7 (32 &/or 64-bit)

- Select your Manufacture & Printer by clicking on the appropriate Manufacture(on the left) and Printer(on the right) from the list provided in the dialog box. Press the Next button to continue.



**“LEGACY”(Kernel Mode) Drivers
Windows 2000**

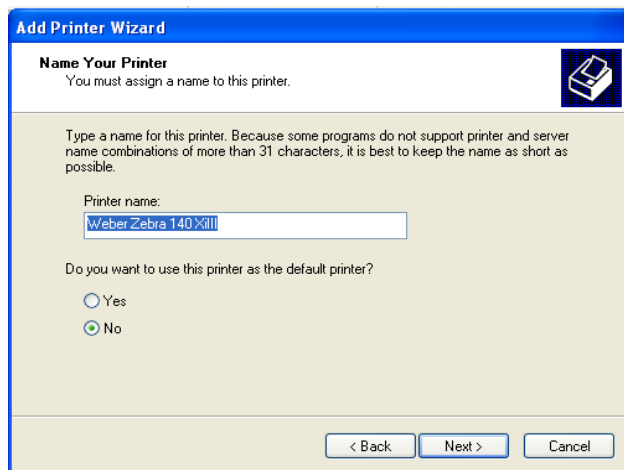


**“LATEST”(User Mode)Drivers
Windows XP,VISTA & 7 (32 & 64-bit)
Windows Server 2003/2008**

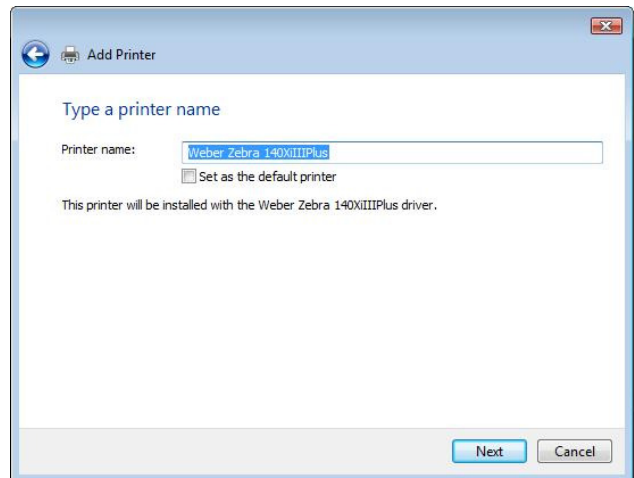
Please note: When installing the “Latest” drivers for Windows XP, VISTA & 7 (32 &/or 64-bit) system, you will have to select the “Manufacture” first on the left-side of the “Install the Printer Driver” screen and then select the “Printer” model type on the right-side, and then click “Next”.

(Selecting the “Manufacture” will effect what type of driver you install being English-no status checking, English-with status checking, or a foreign language(German, Danish, Dutch, French, Portuguese, Spanish)).

- Your new printer name will be displayed in the "Printer Name" box. Press Next to continue.

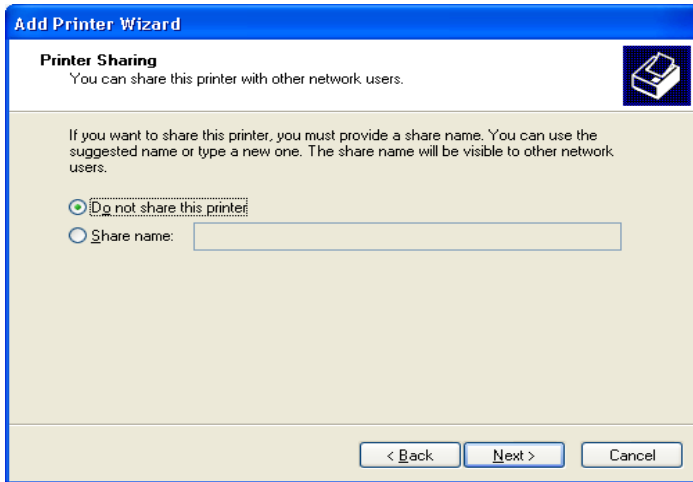


Windows XP

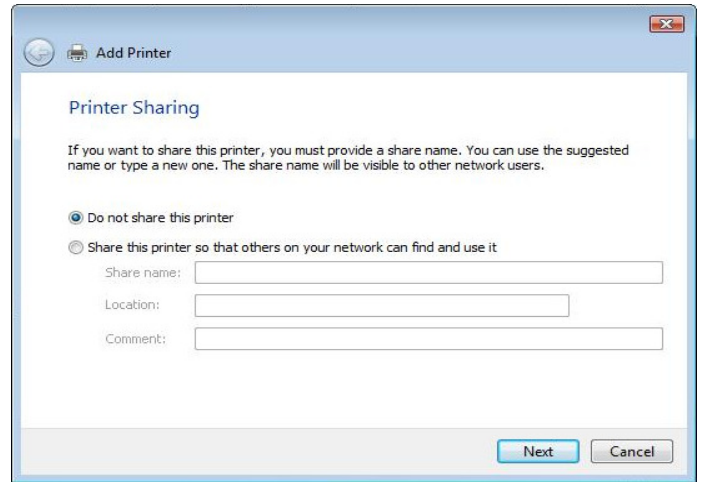


Windows VISTA & 7 (32 & 64-bit)

8. You will be asked if you want to share this printer. If you choose "Do not share this printer", this printer will not be available on the network. If you choose "Share name" option, it will be available on the network. Press Next to continue.

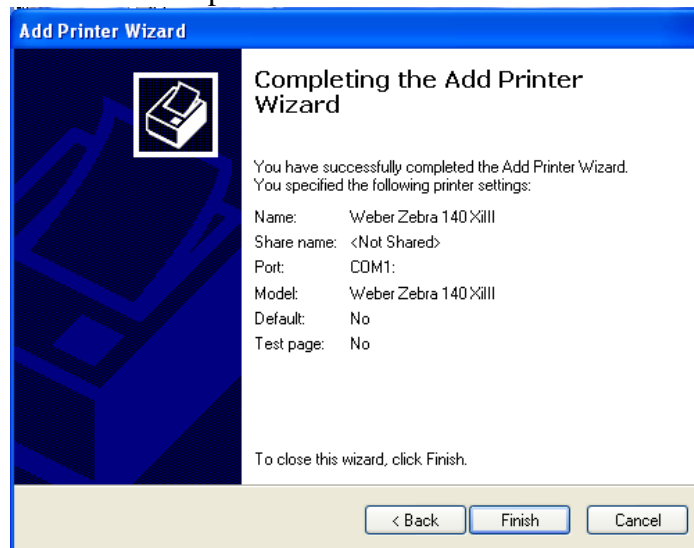


Windows XP



Windows VISTA & 7 (32 & 64-bit)

9. Click the Finish button to complete the Print Driver Installation.

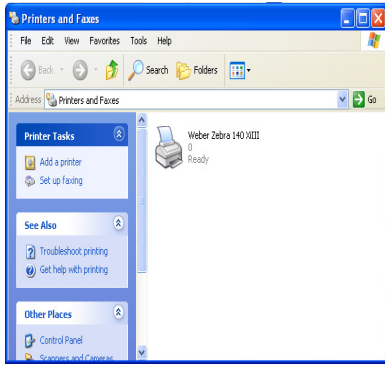


10. Press Continue Anyway to continue installation.

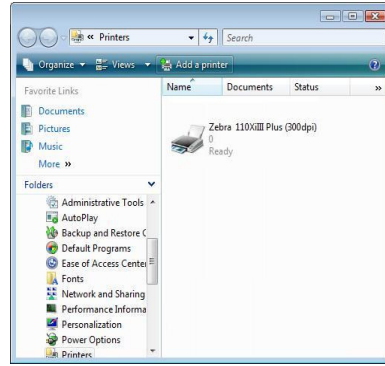
NOTE: At this point you may be asked to locate print driver files, browse to your Installation CD and the folder specified in step 8, page 41.



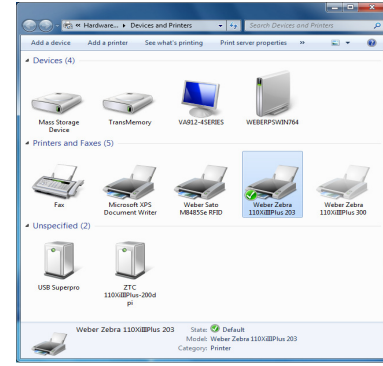
11. Your new driver should now appear in the printers dialog box.



Windows XP



Windows VISTA



Windows 7(32& 64-bit)

12. Right-click on the newly installed printer.
13. Choose Properties(Windows XP & VISTA) or Printer Properties(Windows 7) from the quick-pick menu.
14. Click on the **Ports** tab.(Figure 18)

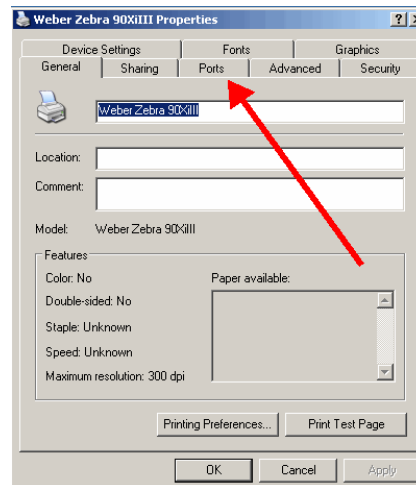


Figure 18

15. **Uncheck** the Enable Bidirectional Support option (near the lower left). (Figure 19)

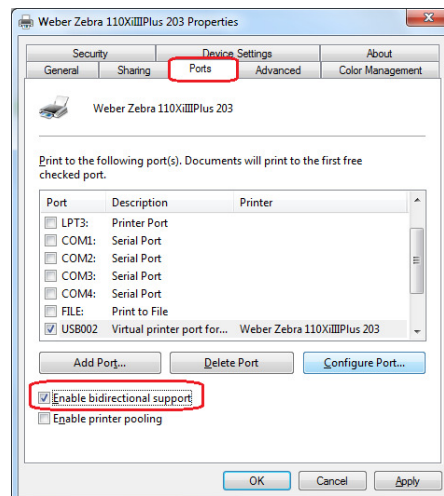


Figure 19

NOTE: If you need to make changes to your port settings click on the Configure Port button, (Figure 19a, b). Ask your IS department if such changes are needed. (The recommended COM1 settings are shown)

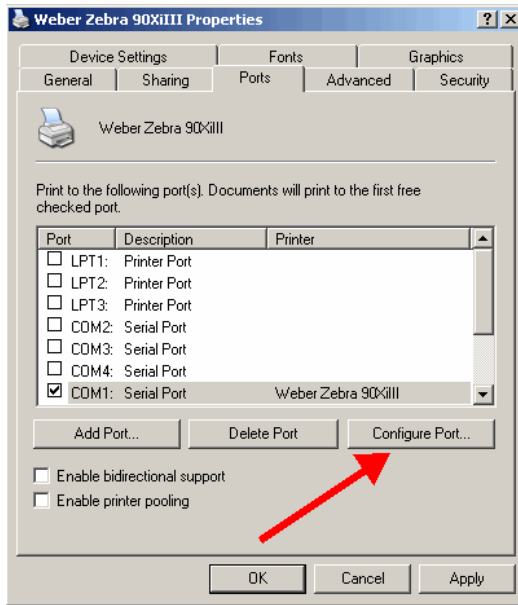


Figure 19a

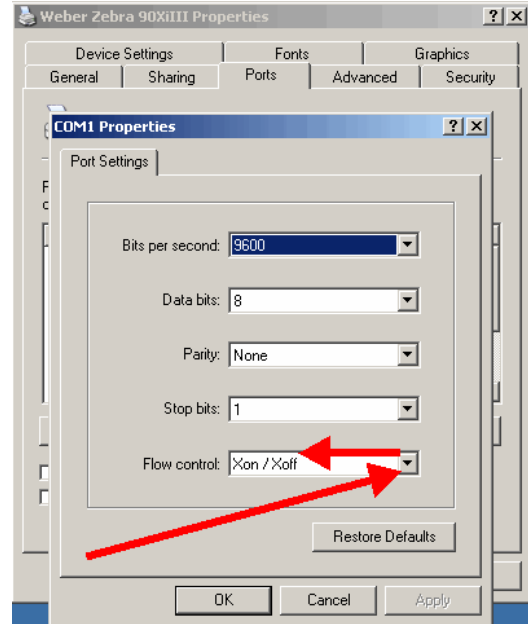


Figure 19b

16. **Printer Properties – “General” Tab – “Preferences Button”** takes you to the Printer’s Preferences window and clicking on the “**Advance Button**” will get you to the “**Document Options**” settings for Darkness, Speed, Label Top Adjustment, Tear-off Setting, Print Rotation, and Repetition(printer or computer repetition) settings as shown in (Figure 20) below:

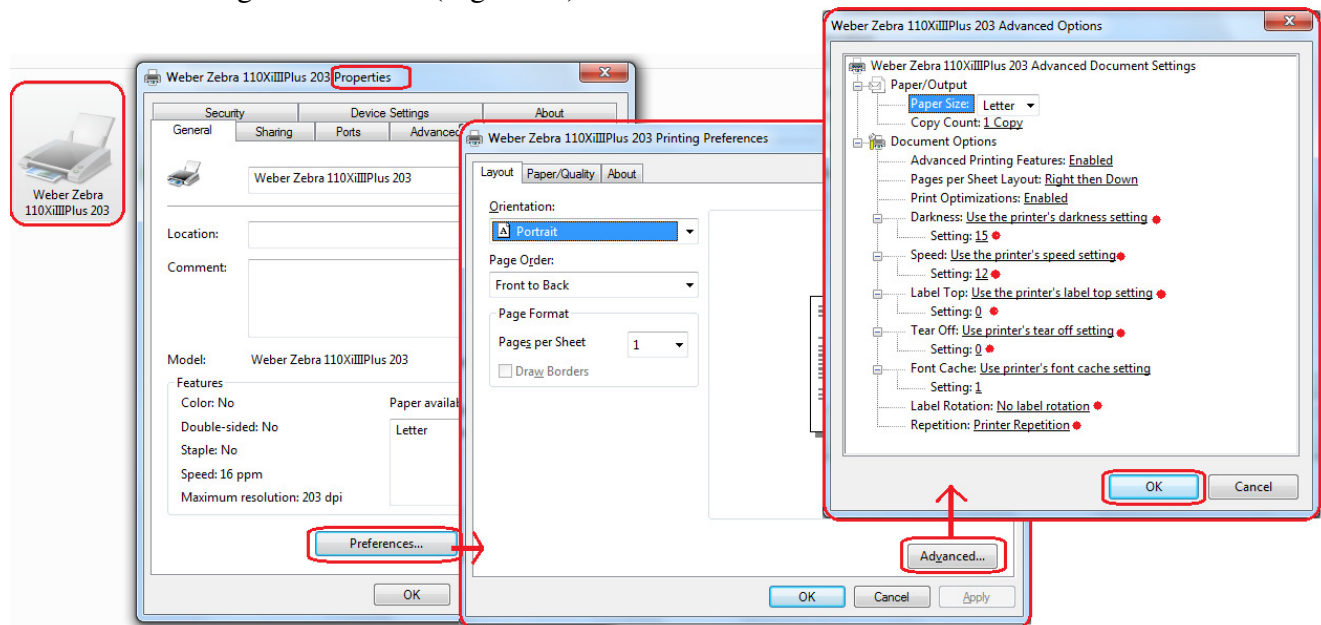


Figure 20

Please note: *The initial printer’s printing preferences from installation will be automatically defaulted to “Use the Printer’s Settings” for Darkness, Speed, Label Top and Tear-off. Whatever settings are set on your Printer will drive the outcome of the printouts of your label formats, unless you have specific printer settings in your label design.*

17. **Printer Properties – “Device Settings” Tab** - takes you to the printer’s device settings for Label Size, Cutter(*if your model printer supports it*), Template Memory(*if your model printer supports it*), and Real-Time Clock (RTC)(*if your model printer supports it*) settings that can be setup in the driver to send down commands to the printer for each label design if needed, as shown in (Figure 21) below:

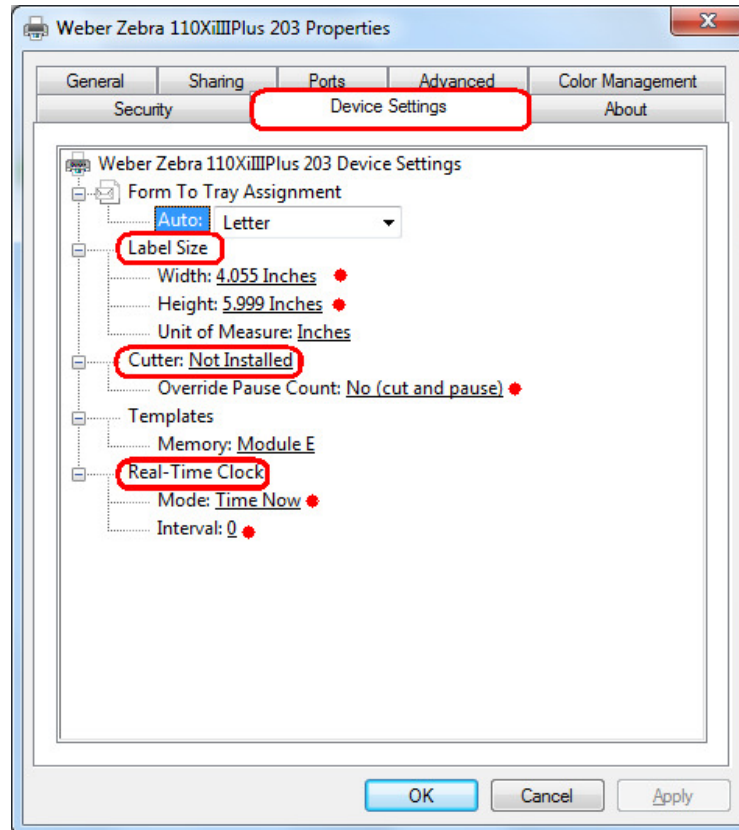


Figure 21

18. Click **OK** to finish setting up your printer. (Figure 21)

If you have any problems or questions while following the installation process please call Weber Marking Systems at 847-364-8500 Ext. 773.

Contact Information:

Phone: 847-364-8500 Ext. 773

Fax: 847-364-8510

E-Mail: legi@webermarking.com